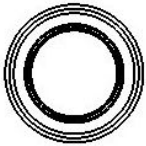
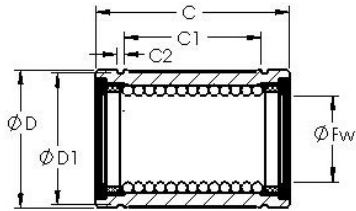




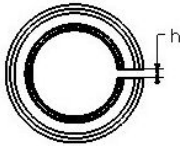
NTPT NTK BEARINGS CO.,LTD.

AST LBB 10 UU Linear bearing

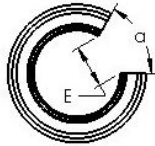
Bearing No. LBB 10 UU



STANDARD



ADJUSTABLE



OPEN

LBB 10 UU Bearing 2D drawings and 3D CAD models

Bore Diameter	15,875 mm
Bearing Type	sealed, standard type
Dynamic Load Rating (Cr)	95
Static Load Rating (Cor)	243
Shaft Dia. (Fw)	0.625
Outside Dia. (D)	1.125
Length (C)	1.500
Groove-to-groove length (C1)	1.104
Groove Width (C2)	0.056
Groove Dia. (D1)	1.075
Weight (g)	65.00
Material	52100 chrome steel, or equivalent