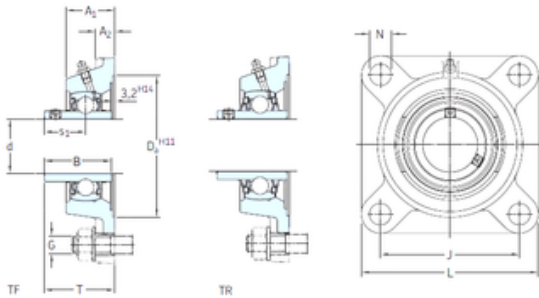




NTPT NTK BEARINGS CO.,LTD.

SKF FY 2.3/16 FM Bearing unit

Bearing No. FY 2.3/16 FM



FY 2.3/16 FM Bearing 2D drawings and 3D CAD models

Bore Diameter	55,563 mm
d	55,563 mm
s1	36,4 mm
A1	47,5 mm
B1	48,4 mm
G	16 mm
J	130 mm
L	162 mm
T	67,4 mm
A2	16 mm
Weight	3,65 Kg
Basic dynamic load rating (C)	43,6 kN
Basic static load rating (C0)	29 kN
Fatigue load limit (Pu)	1,25
Category	Flange Block Bearings
Inventory	0.0
Manufacturer Name	SKF
Minimum Buy Quantity	N/A
Weight / Kilogram	3.26
EAN	7316576613777
Product Group	M06110
Number of Mounting Holes	4
Mounting Method	Eccentric Collar
Housing Style	4 Bolt Square Flange Block
Rolling Element	Ball Bearing
Housing Material	Cast Iron



NTPT NTK BEARINGS CO.,LTD.

Expansion / Non-expansion	Non-expansion
Mounting Bolts	5/8 Inch
Relubricatable	Yes
Insert Part Number	YET 211-203
Seals	M Seal
Housing Configuration	1 Piece Solid
Pilot Configuration	No Pilot
Inch - Metric	Inch
Long Description	4 Bolt Square Flange Block; 2-3/16" Bore; 7.2" Bolt Circle; 5-1/8" Bolt Spacing; 1 Piece Solid; Eccentric Collar Mount; Cast Iron; Ball Bearing; 1-29/32" Length Thru Bore; Relubric
Other Features	Single Row Standard Duty Narrow Inner Race Open End Y Bearing
Category	Flange Block
UNSPSC	31171501
Harmonized Tariff Code	8483.20.40.40
Noun	Bearing
Keyword String	Flanged
Manufacturer URL	http://www.skf.com
Manufacturer Item Number	FY 2.3/16 FM
Weight / LBS	7.17
Length Thru Bore	1.906 Inch 48.42 Millimeter
Bolt Spacing	5.125 Inch 130.18 Millimeter
Cartridge Pilot Depth	0 Inch 0 Millimeter
Nominal Bolt Circle Diameter Round	7.2 Inch 184 Millimeter
Cartridge Pilot Diameter	0 Inch 0 Millimeter
Bore	2.188 Inch 55.575 Millimeter



NTPT NTK BEARINGS CO.,LTD.

Housing material	Cast iron
D_a	150.8 mm
D_{b1}	122 mm
D_{b2}	134 mm
A	47.5 mm
A_1	16 mm
A_3	3.2 mm
A_5	37.5 mm
B_1	48.4 mm
N	18 mm
s_1	35.9 mm
R_G	1/4-28 UNF
R_1	32 mm
D_N	6.5 mm
SW_N	7 mm
G_N	1/4-28 SAE-LT
J_6	148 mm
J_7	45 mm
N_4	4 mm
Basic dynamic load rating C	43.6 kN
Basic static load rating C_0	29 kN
Fatigue load limit P_u	1.25 kN
Limiting speed	3600 r/min
Mass bearing unit	3.25 kg
Thread grub screw G_2	7/16-20 UNF
Hexagonal key size for grub screw N	5.556 mm
Recommended tightening torque for grub screw	28.5 N · m
Recommended diameter for attachment bolts, mm G	16 mm
Recommended diameter for attachment bolts, inch G	0.625 in