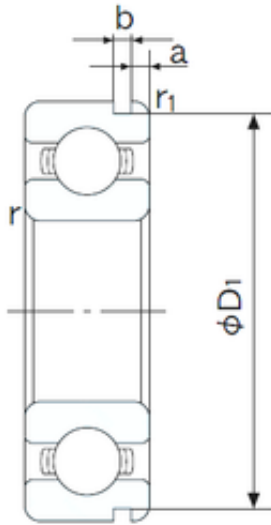




NTPT NTK BEARINGS CO.,LTD.



35 mm x 62 mm x 14 mm NACHI 6007N Ball bearing

Bearing No. 6007N

6007N Bearing 2D drawings and 3D CAD models

Size	35x62x14 mm
Bore Diameter	35 mm
Outer Diameter	62 mm
Width	14 mm
d	35 mm
D	62 mm
B	14 mm
C	14 mm
a	2.08 mm
b	1.9 mm
r min.	1 mm
r1 min.	0.5 mm
D1	59.61 mm
Weight	0.150 Kg
Basic dynamic load rating (C)	16 kN
Basic static load rating (C0)	10,3 kN
(Grease) Lubrication Speed	11000 r/min
Bore Type	Cylindrical Bore
Enclosure	Open
Configuration	Single Row
Bore Size	35 mm
Outside Diameter	62 mm
Width	14 mm
Fillet Radius/Chamfer	1 mm
r1	0.5 mm



NTPT NTK BEARINGS CO.,LTD.

Groove Width	1.9 mm
Groove Diameter	59.6 mm
a (max)	2.1 mm
Dynamic Load Rating	16,000 N
Static Load Rating	10,300 N
Limiting Speed - Grease	12,000 rpm
Limiting Speed - Oil	14,000 rpm
Factor fo	14.8
Radial Clearance	0.006 to 0.020 mm
da (min)	40 mm
Da (max)	57 mm
Dx (min)	68.5 mm
ra (max)	1 mm
Cy (max)	3.4 mm